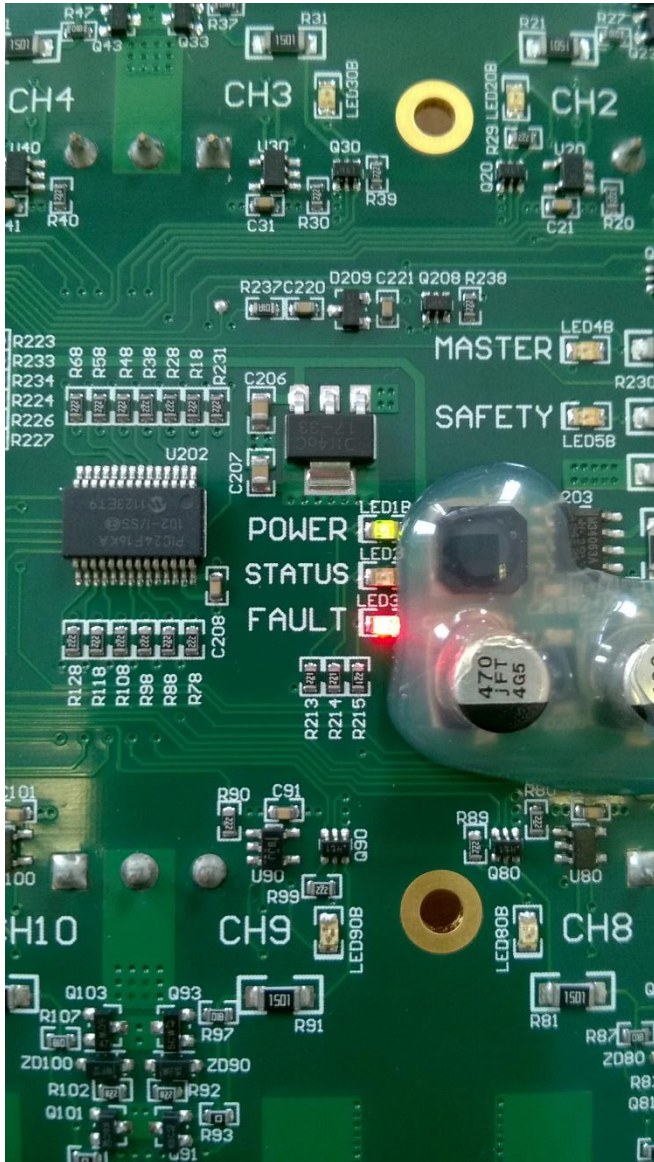


Lodar Soft Control Fault Codes.

Your Lodar PWM remote control receiver has a fault detection system built into it, they have a blue seal in the lid with 6 screws.

The legacy chipset systems which have a red seal in the lid do not have any fault codes.

The fault codes are displayed by red led, which flashes a sequence of two numbers, the picture below shows the words fault on the circuit board, with an unlit LED next to it.



Picture 1 showing the fault code red LED lit.

During normal operation the fault light is extinguished.

When a fault is detected the Lodar receiver stops operating and displays the fault code by flashing.

The fault code is read by counting the flashes, it flashes the first number, then pauses briefly then flashes the second number, once the code is flashed, it will repeat the sequence.

For example a “1-7” will indicate an undercurrent detection on Channel 7, normally this means no output is connected.

The fault codes are:

1-CH# : Load Under Current Detection (channel on for > 1sec and <100mA flowing)

2-CH# : Pre-Check Load short circuit detection

3-CH# : Load Short circuit detection whilst channel on

4-CH# : Open Circuit Driver (Output off when should be on)

5-CH# : Short Circuit Driver (Output on when should be off)

Contact details:

ELP Engineering Ltd, Staffordshire, United Kingdom

orders@elpengineering.co.uk

Tel: 01889 230013